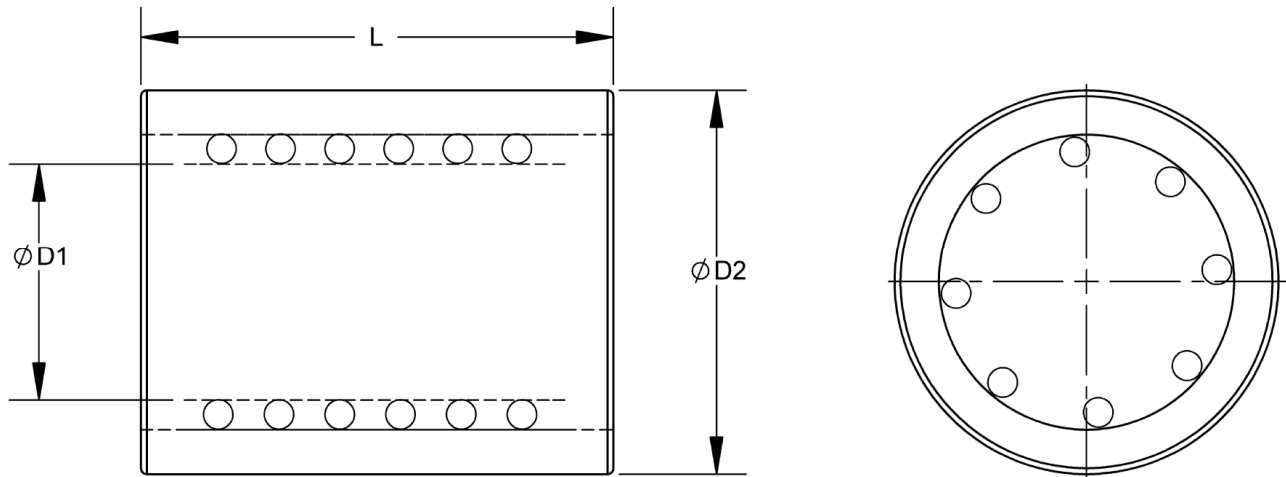


Case Hardened to 60 - 64 Rc



L	Diameter (D1)					
	25	32	40	50	63	80
65	B30.025.065					
80	B30.025.080	B30.032.080	B30.040.080			
95	B30.025.095	B30.032.095	B30.040.095			
110	B30.025.110	B30.032.110	B30.040.110	B30.050.110		
130	B30.025.130	B30.032.130	B30.040.130	B30.050.130		
150		B30.032.150	B30.040.150	B30.050.150	B30.063.150	B30.080.150
170		B30.032.170	B30.040.170	B30.050.170	B30.063.170	B30.080.170
190			B30.040.190	B30.050.190	B30.063.190	B30.080.190
215			B30.040.215	B30.050.215	B30.063.215	B30.080.215
240				B30.050.240	B30.063.240	B30.080.240
265				B30.050.265	B30.063.265	B30.080.265
D2	45	54	65	81	95	112